



TO LET

12 Cubitt Building 10 Gatliff Road, London, SW1W 8QL

£3,650 Per Calendar Month



Brown & Brand

- 24/7 Concierge
- Spa with Jacuzzi
- Available Immediately
- River Views
- Water Bills Included
- Gym
- Underfloor Heating
- Childrens Club With Swimming Pool
- Close to Sloane Square/Victoria Underground Stations
- Intercom Connected To Phone

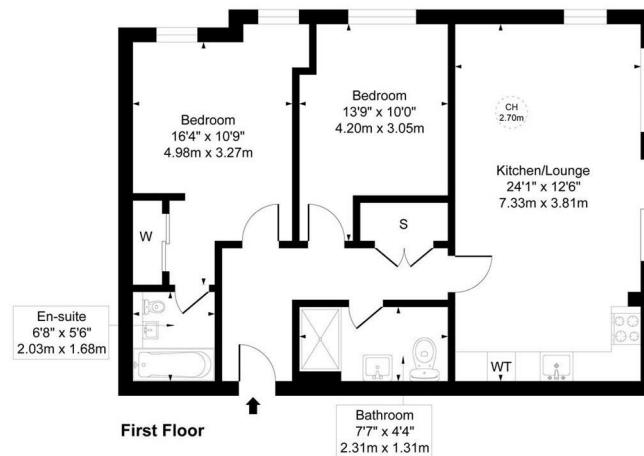
THE PROPERTY

A modern 2 bedroom apartment for let in Cubitt Building which forms part of the popular Grosvenor Waterside development. Located on the 1st floor (with lift) this bright property offers solid wood flooring, a luxury bathroom suite plus en-suite in the master bedroom, an open plan reception room with modern fitted kitchen, utility cupboard. Grosvenor Waterside is a riverside development which is located in an historic dock-side setting in central London. The development benefits from an onsite Sainsbury's Local and the popular Purple Dragon crèche.. There is also a 24 hour concierge service, gym, and spa. The gym is free for residents and includes personal trainers and classes. The spa is available to be booked and is also free for residents. Underground parking is also provided for cars/bikes for residents to use cost-free. Grosvenor Waterside is located just half a mile away from Sloane Square Station (District and Circle lines, zone 1), and Victoria Station (Victoria line and London Overground) and within easy walking distance of fashionable King's Road and Pimlico Road. Situated on the north side of the river by Chelsea Bridge, the green open spaces of Battersea Park are also close by.

SITUATION

Gatliff Road, London, SW1W 8QL

Approximate gross Internal Area
75.61 sq m / 814 sq ft



This floor plan is for illustrative purposes only
and must not be relied upon as a statement of fact.

Directions